

## Actuators

Fixed Actuator



Hinged Actuator



Sliding Actuator



Handle Actuator (No Internal knob)



Handle Actuator



## Heads

Cap



Head



## Core Elements

Escape Release



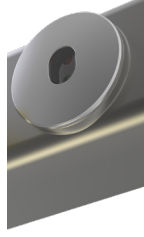
Safety Lock



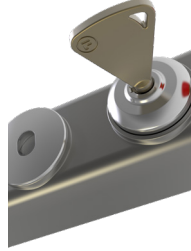
Access Lock



Safety Switch



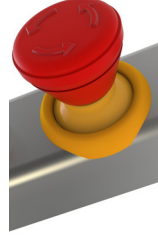
Safety Switch & Solenoid



Extension Blank Element



Emergency Stops

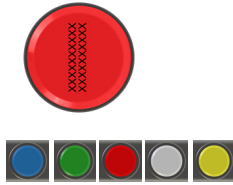


Safety Re-Start

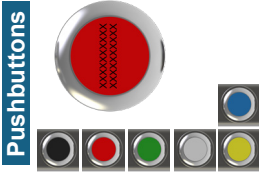


## Core Elements

### Indicator Lamps



### Non-Illuminating Switches



### 2 Position Selector Switch



### 2 Position Selector Key Switch



### Mushroom Pushbutton



### 3 Position Selector Switch



## Base Elements

### Illuminating Pushbuttons



### 2 Position Selector Switch



### 3 Position Selector Switch



## Keys & Accessories

### Safety & Control Quick Disconnect Connectors



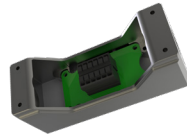
### Keys



### Foot



### Self Wire



### AS- interface



### Lockout Clip



For more information on the Lockout Clip see Head & Cap Element Operating Instructions